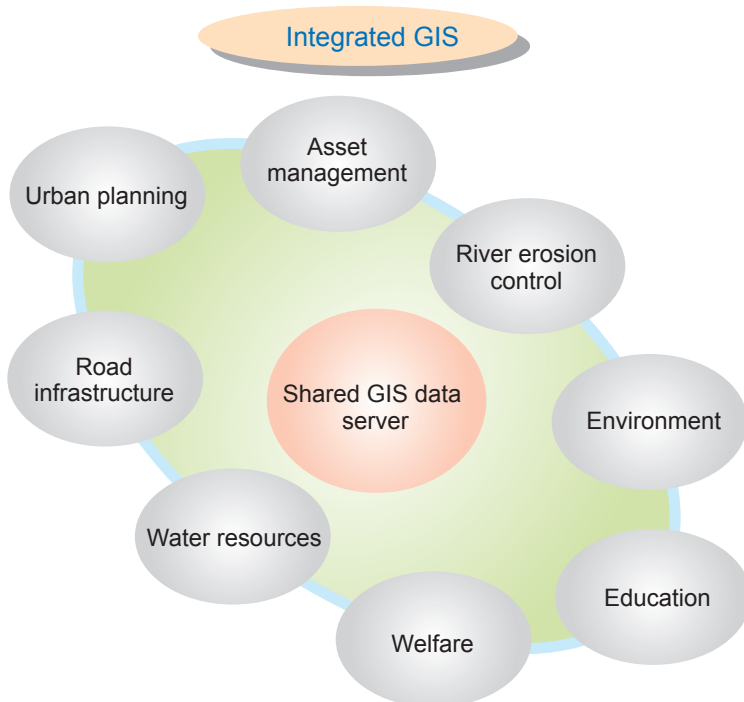


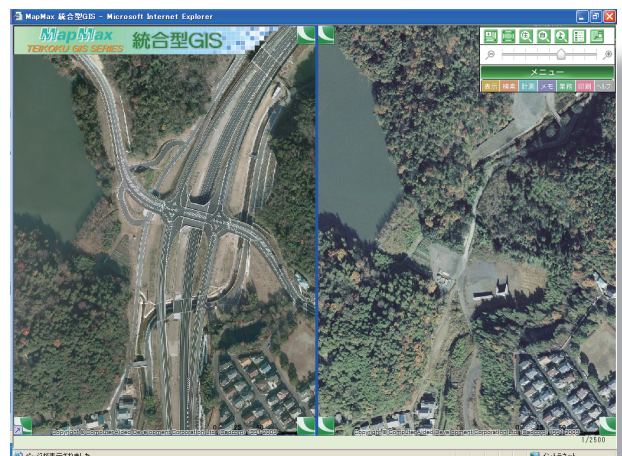
Comprehensive administrative support through map-based information sharing.

Integrated GIS enables the sharing and management of geographic information, such as maps, aerial photographs, land ownership, addresses, etc., from a central data store via the intranet. This data can be accessed simultaneously from multiple locations, thus reducing operational redundancy and enabling a better and more efficient level of service.

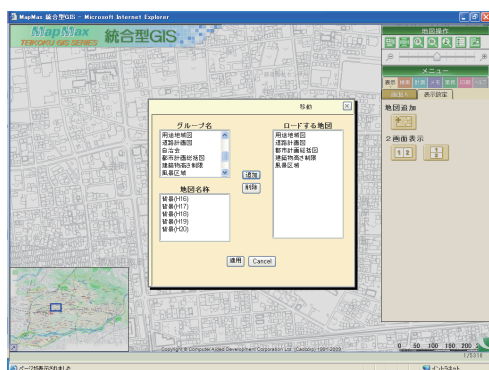


Key benefits

- Speedy handling of enquiries
- Easy interdepartmental information sharing
- Improved efficiency of map-based tasks
- Information sharing during emergency situations



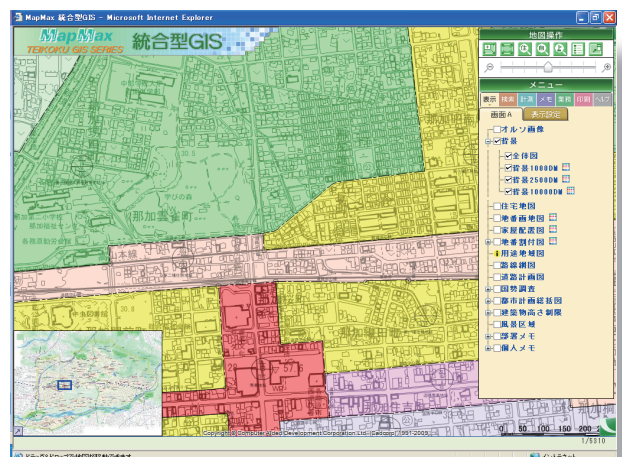
Comparison between photographic data from different years



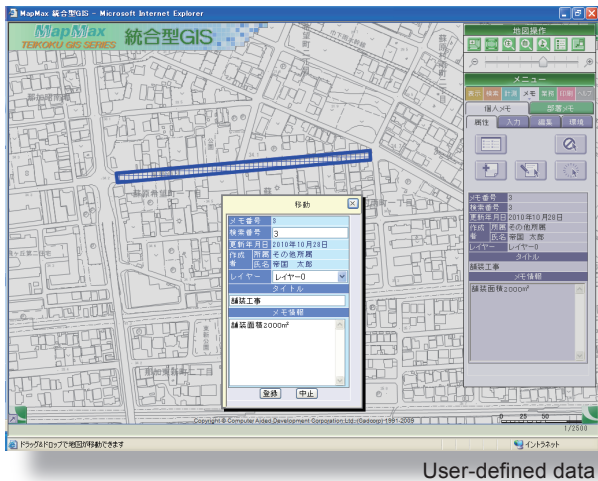
Map data overlay selection



Ground-plan overlay on land-records map



Land use display



User-defined data

Features

Centralized data management

- Improved information flow and coordination between departments through the use of shared GIS data.
- Urban planning map, land usage map
- Land records map
- Aerial photograph composite map
- Map of all types of regulated areas
- Residential map

Map-based tasks

- As the data presented on the map is stored and managed in individual data layers, functionality for managing additional data can easily be added as and when required.
- Individuals with special needs during disaster conditions
- Architectural guidance support
- Asset tax management
- Road register management
- Public grid reference point management
- Road facilities management
- Road maintenance register management

No software installation required

- Operates on Internet Explorer only.
- All screen sizes supported. Maximized or vertical/horizontal split screen map display possible.

Functionality

Search

- Address
- Target object
- Local association
- Whole map

Map display

- Zooming and scrolling
- Overlay display

Custom user data

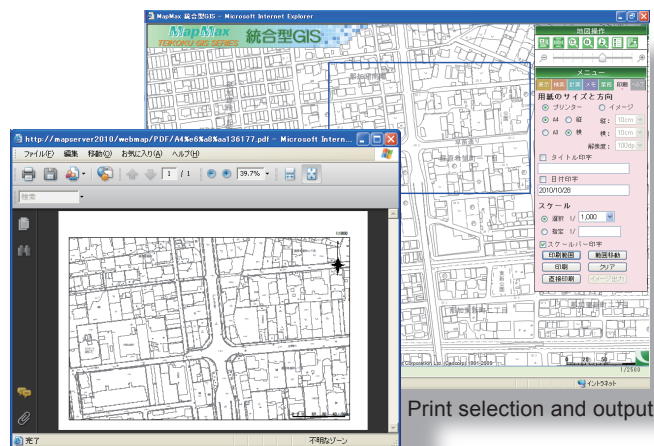
- Map location creation / editing / deletion
- Creation/editing/deletion of associated data
- Custom information visibility settings

Measurements

- Distance
- Area
- Reference grid

Output

- Map Output



Print selection and output



Area measurement

System requirements

Microsoft Internet Explorer 8 or higher.